

Product Overview

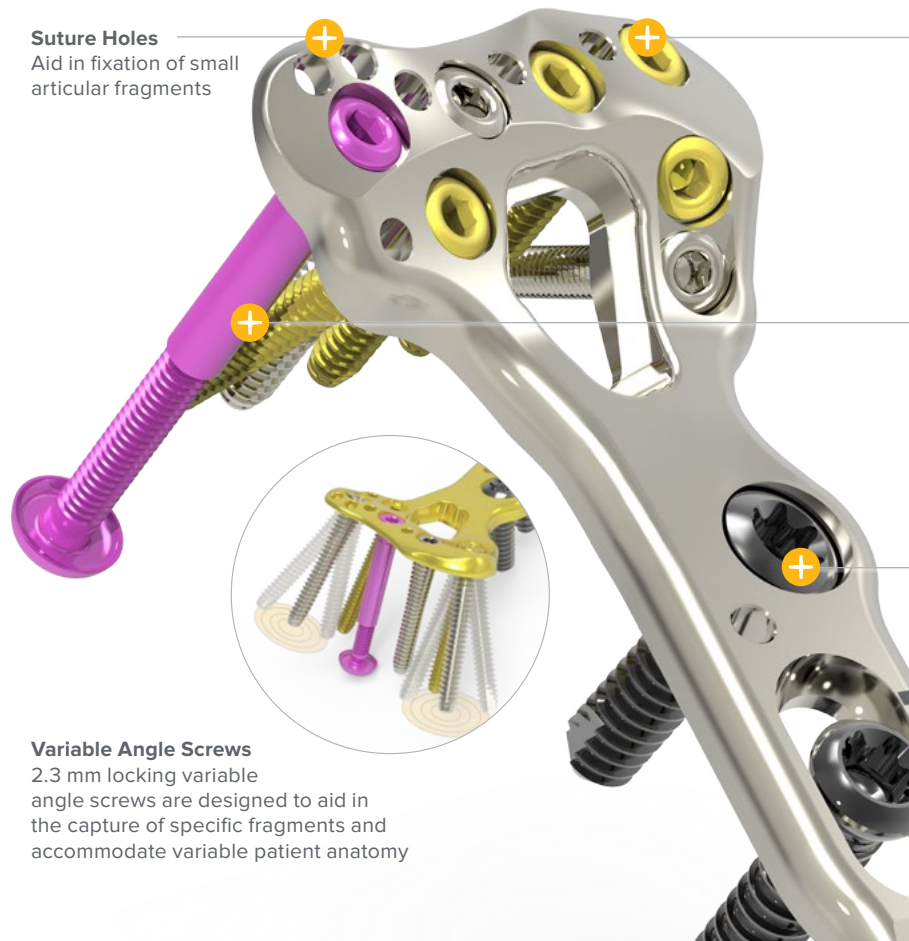


A COLSON ASSOCIATE



Acumed® Acu-Loc® 2 Wrist Plating System

The Acu-Loc 2 Wrist Plating System offers a comprehensive system to treat multiple fracture patterns of the distal radius and distal ulna. The original Acu-Loc Volar Distal Radius Plate has been a market leader in fracture fixation since its introduction in 2004. The Acu-Loc 2 Wrist Plating System presents several new plate options, a unique two-piece locking compression screw, and innovative instrumentation for fracture management and plate positioning.



Suture Holes

Aid in fixation of small articular fragments

Fixed-angle Screws and Pegs

For targeted subchondral bone support, including two dedicated styloid screws

Frag-Loc® Compression Screw

A two-part cannulated screw designed to compress dorsal fragments

Fixed-angle Diverging Diaphyseal Screws

Designed to provide pullout resistance

Variable Angle Screws

2.3 mm locking variable angle screws are designed to aid in the capture of specific fragments and accommodate variable patient anatomy

Comprehensive System

The Acumed Acu-Loc 2 Wrist Plating System contains 48 plate options, including proximally and distally sitting Volar Distal Radius Plates, modular Extension Plates, Volar Distal Ulna Plates, Dorsal Distal Radius Plates, and short and long Wrist Spanning Plates.

Standard and Proximal Volar Distal Radius Plates

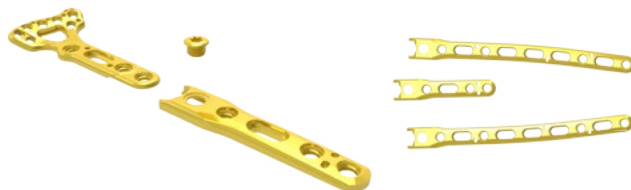
Allow for either intra-articular or extra-articular fracture management while restoring original geometry with a precontoured plate design.



Proximal VDR Plates



Volar Distal Radius (VDR) Plates



Modular Extension Plate Attachments

Offer surgeons the option to extend any of the long and wide Volar Distal Radius Proximal Plates up to 176 mm.



Wrist Spanning Plates

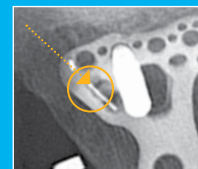
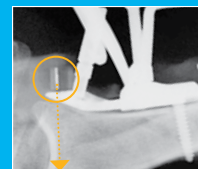
Designed to address complex distal radius fractures, these temporary fixators hold the wrist in distraction and provide ligamentotaxis while the distal radius heals.

Distal Radius Fragment Specific (DRFS) Plates, Dorsal Distal Radius Plates, Volar Distal Ulna Plates, and Extra-Articular (EX) Plates

Designed to independently address the inherent challenges of complex fractures.



Cannulated Locking Bolt and Targeting Guide

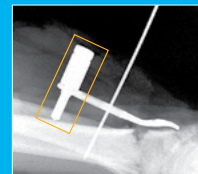


Patented Radiopaque Positioning Posts Within the Targeting Guides

Assist with plate and screw positioning to
avoid the joint space

Kickstand Posts

Assist with plate
positioning and
fragment reduction





**Acu-Loc 2 DRFS Radial Styloid Plate and
Dorsal Lunate Plate**

Distal radius fracture, oblique view



**Acu-Loc 2 Wide Volar Plate and
SLIC Screw®**

Dorsal PA view, scapholunate instability
and distal radius fracture



Acu-Loc Volar Long Plate

Volar A/P view, distal radius fracture



Acu-Loc DRFS Plates
Dorsal Rim Buttress plate



**Acu-Loc 2 DRFS Volar Suture
Lunate Plate with FragLoc**
Lateral view of scaphoid fracture and
radius fracture, using Acutrak 2® Mini
and Acu-Loc 2



Acu-Loc 2 Volar Plate
Lateral view, distal radius fracture



Acumed Headquarters
5885 NW Cornelius Pass Road
Hillsboro, OR 97124

Office: +1.888.627.9957
Office: +1.503.627.9957
Fax: +1.503.520.9618
www.acumed.net

HNW40-09-B | Effective: 2016/12 | © 2016 Acumed® LLC
Patent Nos. 8,425,574 · 8,425,575 · 8,518,090 · 8,523,919 · 8,652,180

These materials contain information about products that may or may not be available in any particular country or may be available under different trademarks in different countries. The products may be approved or cleared by governmental regulatory organizations for sale or use with different indications or restrictions in different countries. Products may not be approved for use in all countries. Nothing contained on these materials should be construed as a promotion or solicitation for any product or for the use of any product in a particular way which is not authorized under the laws and regulations of the country where the reader is located. Specific questions physicians may have about the availability and use of the products described on these materials should be directed to their particular local sales representative. Specific questions patients may have about the use of the products described in these materials or the appropriateness for their own conditions should be directed to their own physician.

Acumed®, Acu-Loc® 2, Acutrak 2®, and SLIC Screw® are registered trademarks of Acumed LLC